

# Most Important Puzzle Test Questions

PDF for  
**IBPS CLERK  
EXAM-2019**

make **MY** exam

Download India's #1 Competitive Exam Prep. App



[www.ibtindia.com](http://www.ibtindia.com)



[www.makemyexam.in](http://www.makemyexam.in)



[headoffice@ibtinstitute.com](mailto:headoffice@ibtinstitute.com)

**Directions (Q. 1-5):- Read the following information carefully and answer the questions that follow.**

In a family of eight persons – A, B, C, D, E, F, G and H – there are four males and four females. There are three married couples and two persons are unmarried. Each of them reads a different magazine, viz India Today (E), India Today (H), Outlook (E), Frontline, Forbes, Business world and Sports star. No couple reads both the versions of the same magazine.

In the family of two generations, each male member except H has two brothers and one sister. G is the mother-in-law of C and reads India Today (H). B, who reads Outlook (E), is the daughter-in-law of H. E, who reads Frontline, is the unmarried brother of F, who does not read Business world. No female reads Outlook (H) or Forbes. D is the brother-in-law of C but he does not read Business world, Sports star or Forbes. A does not read Forbes. H has no son-in-law. F is B's sister-in-law.

**1. Who among the following reads Outlook (H)?**

- (A) Can't say (B) D  
(C) A (D) C  
(E) None of these

Ans1. (C) A

**2. C reads which of the following magazines?**

- (A) Can't say  
(B) India Today (E)  
(C) Business world  
(D) Sports star  
(E) None of these

Ans2. (C) Business world

**3. Which of the following pairs of persons does not represent the couples?**

- I. H and G  
II. A and C  
III. D and B  
(A) Can't say (B) Only I  
(C) Only II (D) Only III  
(E) All of above

Ans3. (E) All of above

**4. How many sons does H have?**

- (A) Two (B) Three  
(C) One (D) Can't say  
(E) None of these

Ans4. (B) Three

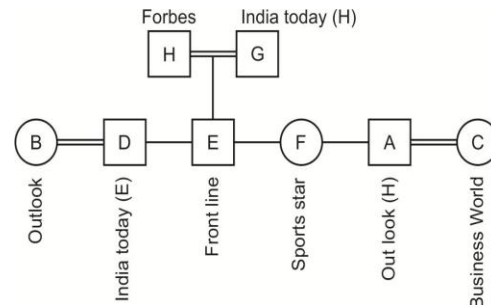
**5. How is A related with F?**

- (A) Father (B) Brother

- (C) Husband (D) Can't say  
(E) None of these

Ans5. (B) Brother

**Explanation (1-5):**



**Directions (6-10):- Study the information given below and answer the questions that follow.**

A, B, C, D, E, F, G, H are staying in a building consisting of 8 floors numbered from 1 to 8 in such a way that the ground floor is numbered 1, the above floor is numbered 2 and so on. All of them stay on different floors.

1. F stays on 6<sup>th</sup> floor. H stays on the topmost floor.
2. 3 persons stay between A and D.
3. 5<sup>th</sup> floor doesn't consist of either B or C. E stays in between B and C.
4. D stays on the 1<sup>st</sup> floor.
5. C is not an immediate neighbor of A.

**6. If E Stays between B and C, then on which floors does B and C stay?**

- (A) 2, 4 (B) 7, 5  
(C) 4, 2 (D) 5, 3  
(E) 1, 3

Ans6. (C) 4, 2

**7. Who stays on the 7th floor?**

- (A) B (B) G  
(C) E (D) A  
(E) D

Ans7. (B) G

**8. Which of the following statements is/are true?**

- (A) G is the immediate neighbor of H and A  
(B) Only 2 persons reside between F and C  
(C) B stays in between A and E  
(D) E resides above A  
(E) All are false

Ans8. (C) B stays in between A and E

**9. Who stays on the 2nd floor?**

- (A) E (B) C  
(C) B (D) A  
(E) D

Ans9. (B) C

**10. Which of the following combinations is true?**

- (A) C - 6th floor  
(B) A - 4th floor  
(C) E - 3rd floor  
(D) G - 5th floor  
(E) None of these

Ans10. (C) E - 3rd floor

**Explanation (6-10):**

Persons	Floors
H	8
G	7
F	6
A	5
B	4
E	3
C	2
D	1

**Directions (11-15):- Read the information given below and answer the questions that follow.**

Four students A, B, C and D likes Yellow, Orange, Black and Blue (not necessarily in same order). All friends have exam of different subjects History, Maths, English, and Science on different days Monday, Tuesday, Wednesday and Thursday(not necessarily in same order).

- (1) C likes Yellow colour.
- (2) D's exam is on Monday.
- (3) One who likes Blue have exam of history.
- (4) B likes Orange colour.
- (5) One who likes Yellow have English exam.
- (6) One who likes Black have Science exam.
- (7) A have exam on Wednesday and B have exam on Tuesday.
- (8) D likes Black colour.

**Q11. Who have Science exam?**

- (A) D (B) C  
(C) B (D) A  
(E) Data Inadequate

Ans11. (A) D

**Q12. Who likes Blue color?**

- (A) B (B) A  
(C) C (D) D  
(E) Data Inadequate

Ans12. (B) A

**Q13. What is the exam day of C?**

- (A) Monday (B) Thursday  
(C) Tuesday (D) Friday  
(E) Wednesday

Ans13. (B) Thursday

**Q14. Which subject exam does B have?**

- (A) Maths (B) Science  
(C) History (D) Hindi  
(E) English

Ans14. (A) Maths

**Q15. On which day History exam is conducted?**

- (A) Monday (B) Saturday  
(C) Wednesday (D) Friday  
(E) Thursday

Ans15. (C) Wednesday

**Explanation (11-15):**

Student	Colour	Day	Subject
A	Blue	Wednesday	History
B	Orange	Tuesday	Maths
C	Yellow	Thursday	English
D	Black	Monday	Science

**Directions (16-20):- Study the following information and answer the below given questions.**

Mamatha, Thanusha, Devi, Farhan, Hema, Ravi and William are seven students studying in three different colleges I, II and III with at least two in each college. Each of them has a favorite subject – English, History, Geography, Mathematics, Physics, Chemistry and Biology, not necessarily in the same order.

Devi's favorite subject is Physics and studies in college II only with Mamatha. Hema doesn't study in college I and she likes English. Farhan studies in college III and doesn't like Mathematics. Those who like Geography and Chemistry study in the same college. William likes Biology and doesn't study in College I. Ravi doesn't study with Hema. Ravi doesn't like Chemistry. Mamatha doesn't like History.

**Q16. What is Mamatha's favorite subject?**

- (A) Geography  
(B) Chemistry  
(C) Mathematics  
(D) Data inadequate  
(E) Other than those given as options

Ans16. (C) Mathematics

**Q17. In which college do three of them study?**

- (A) I (B) II  
(C) III (D) II or III  
(E) Data inadequate

Ans17. (C) III

**Q18. Which of the following groups of students in college III?**

- (A) Farhan, Thanusha, Ravi  
(B) Farhan, William, Ravi  
(C) Farhan, Mamatha  
(D) Data inadequate  
(E) Other than those given as options

Ans18. (E) Other than those given as options

**Q19. What is Thanusha's favorite subject?**

- (A) Chemistry (B) Biology  
(C) Mathematics (D) Geography  
(E) Data inadequate

Ans19. (A) Chemistry

**Q20. Which of the following group of students study in college I?**

- (A) Thanusha, Hema  
(B) Hema, Ravi  
(C) Thanusha, Ravi  
(D) Hema, Farhan  
(E) Data inadequate

Ans20. (C) Thanusha, Ravi

**Explanation (16-20):**

Student	College	Subject
Mamatha	II	Mathematics
Thanusha	I	Chemistry
Devi	II	Physics
Farhan	III	History
Hema	III	English
Ravi	I	Geography
William	III	Biology

**Direction (21-25):- Study the following information carefully and answer the questions given below.**

Seven persons M, N, Q, R, S, T, and U are scheduled to go to different places like Bangalore, Delhi, Pune, Kolkata, Rajasthan, Chandigarh and Chennai but not necessarily in the same order. They are likely to go on the seven days of the week starting from Monday to Sunday but not necessarily in the same order.

N goes to Chennai and went on Thursday. R neither goes to the Pune nor Chandigarh and neither on Saturday nor Sunday. U goes immediately after the person who goes to Bangalore. The person who goes to Rajasthan goes on Wednesday. There are three people between R and T and R go before T. The one who goes to Delhi goes immediately after the person who goes to Chandigarh but before the person who goes to Pune. Q, who goes to Delhi, goes before the person who goes on Sunday. The person who goes to Bangalore goes on Monday. T goes to Chandigarh

**Q21. If U goes on Wednesday, T goes on Saturday, in the same way based on the above arrangement, who goes on Sunday?**

- (A) Q (B) R  
(C) S (D) T  
(E) None of these

Ans21. (A) Q

**Q22. Who among the following goes to Kolkata?**

- (A) T (B) S  
(C) U (D) M  
(E) None of these

Ans22. (C) U

**Q23. How many people scheduled to travel between the person who visited to Delhi and Chandigarh?**

- (A) One (B) None  
(C) Two (D) Three  
(E) More than three

Ans23. (B) None

**Q24. Which one of the combination is correctly matched in the following arrangement?**

- (A) Tues-M-Delhi  
(B) Fri-T-Chandigarh  
(C) Fri-R-Kolkata  
(D) Wed-U-Rajasthan  
(E) None of them is correct

Ans24. (B) Fri-T-Chandigarh

**Q25. Which among the following goes on Sunday?**



- (A) T  
(B) U  
(C) Either M or S  
(D) M  
(E) R

Ans25. (C) Either M or S

**Explanation (21-25):**

Day	Person	City
Monday	R	Banglore
Tuesday	U	Kolkata
Wednesday	M/S	Rajasthan
Thursday	N	Chennai
Friday	T	Chandigarh
Saturday	Q	Delhi
Sunday	M/S	Pune

**DIRECTION (26-30):-** Read the following information carefully and answer the questions that follow.

There are seven persons, namely A, B, C, D, E, F and G. They go to their offices by different cars namely Honda, Maruti, Volkswagen, Ford, Nissan, Hyundai and Chevrolet, but not necessarily in the same order, starting from Monday to Sunday (of the same week). E goes to his office on Thursday. Only one person goes to his office between E and the one who goes by Nissan car. A goes to his office immediately after the one who goes by Nissan car. Only three people go to their offices between A and the one who goes by Volkswagen car. Only two people go to their offices between the one who goes by Volkswagen car and F. The person, who goes to his office by Chevrolet car, goes before F, but after Thursday. More than two people go to their offices between the one who goes by Chevrolet car and C. The one who goes to office by Honda car goes immediately before the one who by Hyundai car. The one who goes to office by Ford car goes immediately before B. G does not go to his office on Tuesday.

**Q26. Who amongst the following goes to his office by Maruti car?**

- (A) A (B) E  
(C) F (D) D  
(E) C

Ans26. (A) A

**Q27. Four of the following five are alike in a certain way and so form a group. Which of the following does not belong to that group?**

- (A) G – Tuesday (B) B - Thursday  
(C) F – Friday (D) A - Saturday  
(E) D – Wednesday

Ans27. (E) D – Wednesday

**Q28. Which of the following is true about B?**

- (A) B goes to his office immediately after F  
(B) B goes to his office by Chevrolet car  
(C) Only two people go to their offices between B and A  
(D) All the given statements are true  
(E) B goes to his office on Sunday

Ans28. (B) B goes to his office by Chevrolet car

**Q29. C has which of the following car?**

- (A) Nissan (B) Hyundai  
(C) Ford (D) Honda  
(E) None of these

Ans29. (D) Honda

**Q30. As per the given arrangement B is related to the one who goes to his office by Volkswagen in a certain way and A is related to the one who goes to his office by Chevrolet car, in the same way, E is related to?**

- (A) The one who goes to his office by Hyundai car  
(B) The one who goes to his office by Honda car  
(C) The one who goes to his office by Ford car  
(D) The one who goes to his office by Maruti car  
(E) None of these

Ans30. (A) The one who goes to his office by Hyundai car

**Explanation (26-30):**

Days	Persons	Cars
Monday	C	Honda
Tuesday	D	Hyundai
Wednesday	G	Volkswagen
Thursday	E	Ford
Friday	B	Chevrolet
Saturday	F	Nissan
Sunday	A	Maruti

**Directions (31-35):-** Study the following information carefully and answer the questions given below.

There are 9 floors in a building numbered 1 to 9 with the ground floor reserved for parking. 9 families Mathews, Rathores, Khandelwals, Jamwals, Kaushiks, Bhatnagars, Malhotras, Srivastavas and Dalmias live there but not necessarily in the same order. They have the following number of members in their family- 3, 4, 2, 6, 12, 10, 9, 7 and 5 but not necessarily in the same order.

Bhatnagars live on 2<sup>nd</sup> floor and have 3 people. The number of people in Malhotras family is one third of the floor on which they live. Kaushiks live on the topmost floor and have maximum number of people in their family. Rathores stay on fourth floor just above Srivastavas who have one more family member than their floor number. Khandelwals have the same number of people as the floor number of Kaushiks. Jamwals live between Khandelwals and Kaushiks and they have half the family members as Kaushiks. Dalmias have the same number of people as the floor on which they live. Mathews have the second highest number of family members.

**Q31. Which family has 7 family members?**

- (A) Matthews (B) Khandelwals  
(C) Rathores (D) Dalmias  
(E) Srivastavas

Ans31. (C) Rathores

**Q32. Which family lives just below Khandelwals and on which floor?**

- (A) None of these  
(B) Malhotras, 6th floor  
(C) Jamwal, 6th floor  
(D) Malhotras, 8th floor  
(E) Jamwal, 8th floor

Ans32. (B) Malhotras, 6th floor

**Q33. Who lives on the 3rd floor?**

- (A) Matthews (B) Jamwals  
(C) Rathores (D) Srivastavas  
(E) Dalmias

Ans33. (D) Srivastavas

**Q34. Which of the families has 5 family members?**

- (A) Bhatnagars (B) Dalmias  
(C) Khandelwals (D) Jamwals  
(E) Rathores

Ans34. (B) Dalmias

**Q35. Which of the following options is true?**

- (A) Mathews - 1st Floor-12 Members

(B) Malhotras - 1st Floor

(C) Khandelwals - 6 family members

(D) Dalmias - 4th floor

(E) None of these

Ans35. (E) None of these

**Explanation (31-35):**

Floor	Person	Member
9	Kaushiks	12
8	Jamwals	6
7	Khandelwals	9
6	Mathotras	2
5	Dalmias	5
4	Rathores	7
3	Srivastavas	4
2	Bhatnagars	3
1	Mathews	10
Parking		

**Directions (36-40):-** Read the following information and answer the questions that follow.

I. Seven friends Mohan, Parag, Rohith, Sahil, Tharun, Uday and Vishal have gathered at the Hyderabad airport. Five of them are scheduled to go to five different places i.e. Delhi, Chennai, Lucknow, Bangalore, Kolkata.

II. Five of them are executives, each specializing in Administration, Human Resource Management, Marketing, Computers and Finance.

III. Tharun, an executive, is going to Chennai and is neither from Finance nor from Marketing.

IV. Parag is an executive from Human Resource Management but has come to the airport to see off his friends.

V. Vishal is a Chartered Accountant and is going to Delhi. Uday is an executive but is not going to any of the five places.

VI. Mohan is an executive, not from Marketing and is flying to one of the destinations but not to Bangalore or Kolkata.

VII. Rohith is an executive from Computers and is not going to Kolkata

**Q36. The one who is going to Chennai is?**

- (A) Not an executive  
(B) From Administration  
(C) From Finance  
(D) Sahil  
(E) None of these

Ans36. (B) From Administration

**Q37. Who among the following specializes in Marketing?**

- (A) Sahil  
(B) Mohan  
(C) Uday  
(D) Data inadequate  
(E) None of these

Ans37. (C) Uday

**Q38. To which of the following places Rohith flying?**

- (A) Kolkata (B) Bangalore  
(C) Delhi (D) Chennai  
(E) Lucknow

Ans38. (B) Bangalore

**Q39. Who among the following is not an executive?**

- (A) Tharun (B) Mohan  
(C) Rohith (D) Parag  
(E) Sahil

Ans39. (E) Sahil

**Q40. Who among the following is an executive going to Lucknow?**

- (A) Parag (B) Rohith  
(C) Vishal (D) Mohan  
(E) Sahil

Ans40. (D) Mohan

**Explanation (36-40):**

Person	Specialization	Place
Tharun	Administration	Chennai
Mohan	Finance	Lucknow
Parag	Human Resource Management	
Rohith	Computers	Bangalore
Sahil		Kolkata
Uday	Marketing	
Vishal	Chartered Accountant	Delhi

**Directions (41-45):- Study the information given and answer the questions given below.**

Six children i.e. A, B, C, D, E and F has born in different days of a week, starting from Tuesday to Monday. They like different colors i.e. Green, Yellow, Black, Grey, Red and Blue.

One day of this week, no one has born. B has not born on Saturday and Thursday. E who likes Green, has born after Thursday. D does not like Black and Red. There is one day gap between E and F, who is not born on Sunday. C who likes Blue, has born just before A who has born before Friday. D has not born on Friday but has born after E's born. C has not born on Wednesday. B likes Yellow. The one who likes Black has born just after the one who likes Grey. F has not born on Thursday.

**Q41. Who among the following has born on Friday?**

- (A) A (B) B  
(C) C (D) D  
(E) E

Ans41. (B) B

**Q42. Who among the following has born on Monday?**

- (A) D (B) E  
(C) A (D) B  
(E) F

Ans42. (E) F

**Q43. Who among the following likes Grey color?**

- (A) D (B) E  
(C) A (D) B  
(E) F

Ans43. (A) D

**Q44. Who among the following likes Black color?**

- (A) D (B) E  
(C) F (D) B  
(E) A

Ans44. (C) F

**Q45. How many children have born after A?**

- (A) One (B) Two  
(C) Three (D) Four  
(E) Five

Ans45. (D) Four

**Explanation (41-45):**

Days	Children	Colors
Tuesday	C	Blue
Wednesday	A	Red
Thursday		
Friday	B	Yellow
Saturday	E	Green
Sunday	D	Grey
Monday	F	Black

**Directions (Q. 1-5):- Read the following information carefully and answer the questions.**

Aman, Boman, Chang, Digvijay, Eshan and Fawad went to six different car showrooms – Star Auto, Badrika Auto, Panash Auto, R.R. Auto, Krishna Auto and Dee Auto and took quotation for six different cars in SUV segment – Tucson, CRV, Pajero, Hexa, Endeavour and Fortuner.

Each of them had different bikes out of Fazer, Karisma, Pulsar, Duke, Apache and Bullet.

The following information is available about them:

- Digvijay went to Badrika Auto and did not take quotation for Tucson or Endeavour and did not had a Fazer.
- The person who went to Krishna Auto asked for quotation of Hexa and did not had Duke or Karisma.
- Fawad had a Duke and took quotation of CRV.
- The person, who had a Bullet, went to R.R. Auto and took quotation of Endeavour. Whereas, the person, who had Pulsar, took quotation for Fortuner.
- The person, who had a Fazer, took quotation for Pajero and did not go to Star Auto or Panash Auto.
- Aman went to Dee Auto, Chang had a Bullet and Boman took the quotation for Hexa.

**Q46. Which bike did Digvijay have and for which car was he looking for?**

- Fazer and Pajero
  - Pulsar and Fortuner
  - Apache and CRV
  - Duke and Hexa
  - None of the above
- Ans46. (B) Pulsar and Fortuner

**Q47. Which of the following statements are not true?**

- Chang had a Bullet bike
- Boman went to Krishna Auto
- Digvijay took quotation for Tucson
- Eshan had a Karisma bike

(E) All the above statements are true

Ans47. (C) Digvijay took quotation for Tucson

**Q48. Who went to Krishna Auto?**

- Fawad
- Eshan
- Boman
- Digvijay
- Chang

Ans48. (C) Boman

**Q49. Which of the following combinations is true?**

- Badrika Auto-Tucson-Karisma
  - R.R. Auto-Hexa-Bullet
  - Krishna Auto-Hexa-Apache
  - Panash Auto-CRV-Duke
  - All of the above are true
- Ans49. (C) Krishna Auto-Hexa-Apache

**Q50. Which bike did Fawad have?**

- Karisma
- Bullet
- Duke
- Fazer
- Pulsar

Ans50.(C) Duke

**Explanation (46-50):**

Persons	Showrooms	Cars/SUV	Bikes
Aman	Dee Auto	Pajero	Fazer
Boman	Krishna Auto	Hexa	Apache
Chang	R.R. Auto	Endeavour	Bullet
Digvijay	Badrika nAuto	Fortuner	Pulsar
Eshan	Star Auto/ Panash Auto	Tucson	Karisma
Fawad	Star Auto/Panash Auto	CRV	Duke

**Directions (51-53): Read the following information carefully. And answer the following questions given below.**

Ten Salesman Jackie, Denny, Harry, Cherry, David, John, Romen, Chris, Mashew and Warner are lives on 10 floor building. The lowermost floor is numbered 1, above the floor numbered 2, & so on. Three Salesman are living between Chris & Jackie. Chris lives an odd numbered floor but above floor numbered 5. Only one Salesman lives between Romen & Mashew who is lives on 3<sup>rd</sup> floor. One Salesman lives between Warner & John. Two floors are there between Harry & David. Neither Jackie nor



Chris was immediately above or immediately below of Warner. Denny lives above Cherry. David is not the immediate neighbor of Denny.

**Q51. How many Salesman lives above Harry?**

- A. 2
- B. 3
- C. 4
- D. 1
- E. None of these.

Ans51. B) 3

**Q52. Which of the following is true about Jackie?**

- A. Cherry and Harry are immediate neighbors of Jackie.
- B. Jackie lives two floors below Harry.
- C. Jackie lives on 7<sup>th</sup> floor.
- D. All of these.
- E. Jackie lives immediately above cherry.

Ans52. B) Jackie lives two floors below Harry.

**Q53. If Cherry and Mashew interchange the positions, who among the following lives immediately above Mashew's floor?**

- A. John
- B. Jackie
- C. Warner
- D. Harry
- E. None of these.

Ans53. D) Harry

Floor	Salesman
10	David
9	Chris
8	Denny
7	Harry
6	Cherry
5	Jackie
4	John
3	Mashew
2	Warner
1	Romen

**Directions (54-56): Read the following information carefully. And answer the following questions given below.**

There are seven businessmen viz. Jackie, Denny, Harry, Cherry, David, John and Romen attend conference in seven days of a week Sunday to

Saturday, not necessarily in the same order. Denny attends conference after David. Number of businessman between Cherry and David is one less than the number of businessman between Cherry and Denny. Only one businessman attend conference between Jackie and Harry. Number of businessman attend conference before Cherry is equal to Number of businessman attend conference after Romen. Denny attends conference immediately before John. Jackie attends conference before Wednesday. Romen attends conference after Cherry.

**Q54. Who attends conference immediately before Romen but immediately after Cherry?**

- A. Denny
- B. Harry
- C. John
- D. David
- E. None of these

Ans4. B) Harry

**Q55. If all the businessman made alphabetical order from Sunday to Saturday, How many businessman will remain unchanged at their original position?**

- A. None
- B. 2
- C. 1
- D. 3
- E. None of these.

Ans55. C) 1

**Q56. Which of the following businessman attend conference before Romen?**

- A. Cherry
- B. Jackie
- C. David
- D. All of these
- E. None of these.

Ans56. D) All of these

Days	Businessman
Sunday	David
Monday	Jackie
Tuesday	Cherry
Wednesday	Harry
Thursday	Romen
Friday	Denny
Saturday	John

**Directions (57-60): Read the following information carefully. And answer the following questions given below.**

Eight students – Jackie, Denny, Harry, Cherry, David, John, Romen and Chris, have attend seminar on three different dates on 6, 13, 19 of the months of March, September and December of year 2019. No two students attend the seminar on the same date of the same month. One of the dates of in the given months is a holiday. Cherry attends seminar on prime numbered date of a month which has even number of days. Holiday is come in a date of 19th of the month. Only two students attend seminar between Jackie and Cherry. Jackie doesn't attends the seminar in December. More than four students between Denny and John. David attends seminar immediately before Romen. Romen does not attend the seminar in December. Chris attends after Harry. Chris and Denny are not immediate neighbors. At least one month gap between Harry and Cherry. Chris is not the last student to attend the seminar.

**Q57. How many students attend seminar between Jackie and Chris?**

- A. 5
- B. 4
- C. 3
- D. No one
- E. None of these

Ans57. B) 4

**Q58. Who attend the seminar immediately before Cherry?**

- A. David
- B. Harry
- C. Romen
- D. No one
- E. None of these.

Ans58. C) Romen

**Q59. David attend seminar on which of the following date?**

- A. 13th March
- B. 19th September
- C. 19th December
- D. 19th March
- E. None of these.

Ans9. D) 19th March

**Q60. Who attend the seminar before Harry?**

- A. Cherry
- B. Romen
- C. Jackie
- D. All of these.
- E. None of these.

Ans60. D) All of these.

Month/Dates	6	13	19
March (31)	Denny	Jackie	David
September(30)	Romen	Cherry	-
December (31)	Harry	Chris	John

**Directions (61-64): Read the following information carefully. And answer the following questions given below.**

There are 8 family members i.e. 1, 2, 3, 4, 5, 6, 7, and 8 live on 8 different floors of a building, lowermost floor is numbered as 1 and topmost floor is numbered as 8. There are only 3 female members and 3 generation in a family. There is only three persons live between 2's son and 2's wife. 6 is daughter-in-law of 1 and has only two children. There is only three persons live between 1's brother-in-law and 6. 8 doesn't live above 1. 4, who lives on odd numbered floor, lives below 8 but not lives above 6. Aunt of 5 lives above 5's floor. 7 lives on odd numbered floor but not on 5th floor. 1 is a wife of 8's brother. 3 doesn't live just below 7's uncle. 2, who is not from 2nd generation, has one daughter. 6 lives just below 2's son. 8 and 5 live on even numbered floor. 4 is not a female member. 3 doesn't live just above 1 and just below 1's Daughter in law. 7 is married.

**Q61. Who among the following is/are a son of 7?**

- A. 5
- B. 3
- C. None of these
- D. 4
- E. Both (1) and (4)

Ans61. E. Both (1) and (4)

**Q62. Who among the following is a son of 2?**

- A. 4
- B. 5

- C. 7  
D. 3  
E. None of these

**Ans62.** C. 7

**Q63. Who amongst the following lives on floor number 3?**

- A. 2's son  
B. 4  
C. None of these  
D. 2's wife  
E. 5

**Ans63.** D. 2's wife

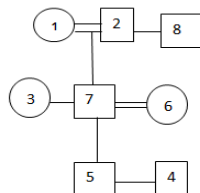
**Q64. 3 lives on which of the following floor?**

- A. 4th floor  
B. 6th floor  
C. 5th floor  
D. None of these  
E. 8th floor

**Ans64.** E. 8th floor

**Explanation (61-64):**

Floor	Persons
8	3
7	7
6	6
5	2
4	5
3	1
2	8
1	4



**Directions (65-69): Read the following information carefully. And answer the following questions given below.**

Nitin Kumar, Ramesh Kumar, Sapna Rajpoot, Kamal Jasrotia, Gulshan Singh, Neha Jarewal and Lovely Kohli are seven employees of IBT institute. There are no other employees besides them. The management body of the IBT Institute decided to post the seven employees in seven different branches. The names of the states Delhi, Chandigarh, Barnala, Lucknow, Meerut, Patna and Kerala. The names of the states are not necessarily in the same order as that of the names of the employees. There are three married couples among the employees. One feature is that

despite having equal efficiencies their salaries are different.

Sapna Rajpoot has been posted in Delhi and her salary is more than the salary of the employee posted in Lucknow or the one in Barnala. Gulshan Singh is married to the employee posted in Patna and Gulshan Singh gets the least salary. No woman is posted in Barnala, Lucknow or Patna. Lovely Kohli is married to Ramesh Kumar and his salary is more than Nitin Kumar or Kamal Jasrotia. Neha Jarewal is not posted in Barnala or Meerut. The salary of the employee who is posted in Patna is more than that of the one posted in Kerala but less the one posted in Barnala. The salary of Ramesh Kumar, who is posted in Chandigarh is more than that of Nitin Kumar. Nitin Kumar is posted in Kerala. Neha Jarewal's wife is not posted either in Meerut or Kerala. No one gets more salary than the wife of the employee who is posted in Barnala. None of the male employees was drawing more salary than Neha Jarewal. Lovely Kohli is posted in Barnala.

**Q65. Who among the following employees gets the highest salary?**

- 1) Ramesh Kumar
- 2) Sapna Rajpoot
- 3) Neha Jarewal
- 4) Data Inadequate
- 5) None of these

**Ans65.** 1) Ramesh Kumar

**Q66. Which of the following is a right combination of the highest paid of male and female?**

- 1) Ramesh Kumar-Lovely Kohli
- 2) Neha Jarewal-Kamal Jasrotia
- 3) Ramesh kumar-Neha Jarewal
- 4) Data Inadequate
- 5) None of these

**Ans66.** 3) Ramesh kumar-Neha Jarewal

**Q67. What is Neha Jarewal's position from the Nitin Kumar when the employees are arranged in descending order of their salaries ?**

- 1) First
- 2) Second
- 3) Third
- 4) Data Inadequate
- 5) None of these

**Ans67.** 3) Third

**Q68. Which of the following branch is Neha Jarewal posted in ?**

- 1) Chandigarh
  - 2) Barnala
  - 3) Lucknow
  - 4) Data Inadequate
  - 5) None of these
- Ans68. 3) Lucknow

**Q69. Which of the following statements is true?**

- 1) Ramesh Kumar is posted at Barnala.
  - 2) Neha Jarewal's salary is more than Sapna Rajpoot's salary.
  - 3) Sapna Rajpoot gets more salary than Neha Jarewal but less than Ramesh Kumar.
  - 4) Nitin Kumar is a male.
  - 5) None of these
- Ans69. 3) Sapna Rajpoot gets more salary than Neha Jarewal but less than Ramesh Kumar.

**Explanation (65-69):**

Employees	Gender	Branches	Rank
Nitin Kumar	Male/Female	Kerala	VI
Ramesh Kumar	Female	Chandigarh	I
Sapna Rajpoot	Female	Delhi	II
Kamal Jasrotia	Male	Patna	V
Gulshan Singh	Female	Meerut	VII
Neha Jarewal	Male	Lucknow	III
Lovely Kohli	Male	Barnala	IV

**Directions (70-74): Read the following information carefully. And answer the following questions given below.**

Nine babies viz.  $B_A$ ,  $B_E$ ,  $B_I$ ,  $B_M$ ,  $B_Q$ ,  $B_U$ ,  $B_V$ ,  $B_Y$  and  $B_S$  stay in a building having nine floors. Only one babies stays on one floor. All of them wearing different colors cap i.e. Red, Pink, Violet, Green, Orange, Black, yellow, Purple and Blue, not necessarily in the same order. The ground floor is numbered 1, the floor above it is numbered 2, and so on and the topmost floor is numbered 9.

$B_V$  wears Violet cap and stays on an even numbered floor.  $B_A$  stays on any even numbered floor below the floor on which  $B_V$  stays. The one, who wears Purple color cap, stays on the fourth floor.  $B_Q$  stays on the second floor and wears pink color cap. The one, who wears blue cap, stays on the third floor.  $B_A$

does not wear Orange cap. There are two floors between the floors on which babies who wear Black cap and Violet cap stay.  $B_I$  wear Red cap. There are three floors between the floors on which  $B_I$  and  $B_Y$  stay.  $B_M$  stays on a floor immediately above  $B_S$ 's floor. There is one floor between floors on which  $B_U$  and  $B_Y$  stay.  $B_U$  does not wear Blue cap. The one who wear yellow cap stays on the topmost floor.  $B_U$  does not stay on the ground floor. There are only babies stay below the one who wears blue cap.

**Q70. Who amongst the following wear Orange cap?**

- 1)  $B_M$
  - 2)  $B_S$
  - 3)  $B_Y$
  - 4)  $B_U$
  - 5) None of these
- Ans70. 4)  $B_U$

**Q71. Who amongst the following stays on the topmost floor?**

- 1)  $B_U$
  - 2)  $B_Y$
  - 3)  $B_M$
  - 4)  $B_I$
  - 5) None of these
- Ans71. 5) None of these

**Q72.  $B_A$  wears which of the following cap?**

- 1) Purple
  - 2) Blue
  - 3) Green
  - 4) Yellow
  - 5) None of these
- Ans72. 3) Green

**Q73. Who stays on the floor which is exactly between the floor on which  $B_V$  stays and the floor on which  $B_A$  stays?**

- 1)  $B_E$
  - 2)  $B_Y$
  - 3)  $B_I$
  - 4)  $B_U$
  - 5) None of these
- Ans73. 4)  $B_U$

**Q74. How many floors are there between the floor on which  $B_S$  stays and the floor on which  $B_I$  stays?**

- 1) One
- 2) Two



- 3) None  
 4) Three  
 5) More than three

Ans74. 1) One

**Explanation (70-74):**

Floor	Babies	Color
9	B <sub>E</sub>	Yellow
8	B <sub>V</sub>	Violet
7	B <sub>U</sub>	Orange
6	B <sub>A</sub>	Green
5	B <sub>Y</sub>	Black
4	B <sub>M</sub>	Purple
3	B <sub>S</sub>	Blue
2	B <sub>Q</sub>	Pink
1	B <sub>I</sub>	Red

**Directions (75-79):** Read the following information carefully. And answer the following questions given below.

Eight servants viz. S<sub>1</sub>, S<sub>2</sub>, S<sub>3</sub>, S<sub>4</sub>, S<sub>5</sub>, S<sub>6</sub>, S<sub>7</sub> and S<sub>8</sub> works in an eight-storey building but not necessarily in the same order. The ground floor is numbered 1 and the one above that is numbered 2 and so on till the topmost floor is numbered 8. Each one of them wears different color bands i.e. red, black, pink, yellow, orange, blue, brown and purple (but not necessarily in the same order). They work on different months viz. February, April, June, July, August, September, October, December.

S<sub>4</sub> lives on an even numbered floor. Only three servants live between S<sub>4</sub> and S<sub>5</sub>. Only one servant lives between S<sub>5</sub> and S<sub>7</sub>. S<sub>7</sub> lives on one of the floors below S<sub>5</sub>. Only two servants live between S<sub>7</sub> and S<sub>6</sub>.

S<sub>8</sub> lives on a floor that is immediately below S<sub>6</sub>. Only two servants live between S<sub>5</sub> and S<sub>2</sub>. S<sub>1</sub> does not live on the lowermost floor. The servant who wears yellow band lives on the floor numbered 7. S<sub>8</sub> wears pink band. The servant who wears black color band lived on the topmost floor work after August.

The servants who lived on odd numbered floors work in the months which has less than 31 days. The servant who work in February lived on one of the floors above the 4th floor. The servant who lived on the 5th floor work in one of the months after April. The servant who lived on the lowermost floor work in one of the months after June and wears red band. The servant who wears blue band lived immediately above the 4th floor. The servant who work in July wears pink band. S<sub>6</sub> wears purple band work in the month before June. The servant who wears brown

band work in the month after July. S<sub>7</sub> wears orange band work after October.

**Q75. Which of the following Statements is true with respect to the given information?**

- S<sub>5</sub> lives immediately above the one who wears yellow band.
- S<sub>6</sub> lives immediately above S<sub>3</sub>
- Only three servant live between S<sub>6</sub> and the one who wears black band.
- S<sub>8</sub> wears orange band.
- All the given statements are true.

Ans75. 1. S<sub>5</sub> lives immediately above the one who wears yellow band.

**Q76. Who amongst the following lives exactly between S<sub>7</sub> and the one who wears black band?**

- S<sub>5</sub>
- S<sub>1</sub>
- S<sub>8</sub>
- S<sub>6</sub>
- S<sub>3</sub>

Ans76. 2. S<sub>1</sub>

**Q77. Out of Four of the following bands does S<sub>8</sub> wears?**

- yellow
- blue
- black
- pink
- purple

Ans77. 4. pink

**Q78. Four of the following five are alike in a certain way and so form a group. Which one of the following does not belong to the group?**

- S<sub>5</sub> – yellow
- S<sub>7</sub> – blue
- S<sub>7</sub> – orange
- S<sub>4</sub> – purple
- S<sub>6</sub> – pink

Ans78. 3. S<sub>7</sub> – orange

**Q79. How many servant live between S<sub>1</sub> and the one who wears pink?**

- Four
- Three
- Two
- Five
- None

**Ans79. 1. Four****Explanation (75-79):**

Floor	Servant	Band	Months
8	S <sub>5</sub>	Black	October
7	S <sub>1</sub>	Yellow	February
6	S <sub>7</sub>	Orange	December
5	S <sub>2</sub>	Blue	June
4	S <sub>4</sub>	Brown	August
3	S <sub>6</sub>	Purple	April
2	S <sub>8</sub>	Pink	July
1	S <sub>3</sub>	Red	September

**Directions (80-84):** Read the following information carefully. And answer the following questions given below.

Eight robots viz. R<sub>D</sub>, R<sub>H</sub>, R<sub>L</sub>, R<sub>P</sub>, R<sub>T</sub>, R<sub>X</sub>, R<sub>Y</sub> and R<sub>Z</sub> are living in a building on different floors such as ground floor is numbered as 1 and top floor is numbered as 8, but not necessarily in the same order. All of them of different color T-shirt. i.e. red, pink, black, yellow, white, green, orange and purple, but not necessarily in the same order.

Four robots live between R<sub>Y</sub> and the one whose color is pink, who lives above R<sub>X</sub>. R<sub>D</sub> lives at odd no floor except 7th floor and does not live adjacent to R<sub>X</sub>. The one whose color is orange lives above the one whose color is pink. One robot lives between R<sub>D</sub> and the one whose color is red. R<sub>Z</sub> is of black color and lives above 5th floor. R<sub>T</sub> does not live adjacent to the one whose color is red and does not of yellow color and purple. R<sub>P</sub> does not live on an odd no. floor and does not of orange and pink color. The one whose color is white lives at ground floor. More than three robots

live between one color is One robot between R<sub>X</sub> does orange one color is does not adjacent to R<sub>T</sub>. R<sub>L</sub> does not live on an even numbered floor.

Floor	Robots	Color
8	R <sub>Z</sub>	Black
7	R <sub>L</sub>	Orange
6	R <sub>H</sub>	Pink
5	R <sub>X</sub>	Red
4	R <sub>P</sub>	Yellow
3	R <sub>D</sub>	Purple
2	R <sub>T</sub>	Green
1	R <sub>Y</sub>	White

R<sub>T</sub> and the whose black. lives R<sub>L</sub> and R<sub>X</sub>. not of color. The whose yellow live

**Q80. How many robots live between R<sub>D</sub> and the one whose color is pink?**

- (1) One
- (2) Four
- (3) Two
- (4) Three
- (5) None of these

**Ans80. (3) Two**

**Q81. Who among the following robots lives on 5th floor?**

- (1) R<sub>X</sub>
- (2) The one whose color is purple.
- (3) R<sub>L</sub>
- (4) The one whose color is green.
- (5) None of these

**Ans81. (1) R<sub>X</sub>**

**Q82. Who among the following lives on 6th floor?**

- (1) R<sub>Z</sub>
- (2) R<sub>X</sub>
- (3) R<sub>H</sub>
- (4) R<sub>L</sub>
- (5) None of these

**Ans82. (3) R<sub>H</sub>**

**Q83. Who among the following robot live immediately above the one whose color is green?**

- (1) R<sub>T</sub>
- (2) R<sub>H</sub>
- (3) R<sub>Y</sub>
- (4) R<sub>X</sub>
- (5) None of these

**Ans83. (5) None of these**

**Q84. Four of the following five are alike in certain way based from a group, find the one that does not belong to that group?**

- (1) The one whose color is yellow.
- (2) R<sub>L</sub>
- (3) R<sub>Z</sub>
- (4) The one whose color is green.
- (5) R<sub>H</sub>

**Ans84. (2) R<sub>L</sub>****Explanation (80-84):**

**Direction (85-89):** Read the following information carefully. And answer the following questions given below.

Seven wholesale companies viz. Rymet, Zycian, Symstart, Voxgeo, Zopho, Oxoxi and Nusey sell different clothes on different days of the week starting from Monday. The clothes brands are Nike, Adidas, Vans, Tommy, Gildan, Champion and Levi's but not necessarily in the same order.

Symstart sell clothes on Friday. Two companies sell between Symstart and Nusey. No one sell clothes between Nusey and the one who sell Vans. Three days are between the ones who sell Vans and Levi's. The one who sell Tommy sell just before the one who sell Gildan but after Nusey. Zopho sell just after Rymet, who sell from Champion. Two companies sell between Zycian and Oxoxi, who did not sale Nike. The one who sell Nike clothes sell just before the one who sell Adidas clothes. Neither Nike nor Adidas clothes was sell on Wednesday.

**Q85. Four of the following five belong to a group in a certain way, find which of the one does not belong to that group?**

1. Oxoxi – Tommy
2. Voxgeo – Vans
3. Nusey – Adidas
4. Rymet – Champion
5. Zopho – Gildan

**Ans85.** 5. Zopho – Gildan

**Q86. Who among the following company sell clothes on Tuesday?**

- (1) Symstart
- (2) Zycian
- (3) Voxgeo
- (4) Nusey
- (5) None of these

**Ans86.** (4) Nusey

**Q87. Who among the following company sell clothes just before the one who sell Champion?**

- (1) Rymet
- (2) Symstart
- (3) Zopho
- (4) Zycian
- (5) None of these

**Ans87.** (2) Symstart

**Q88. How many companies sell clothes between Nusey and Zycian?**

- (1) Two
- (2) Four

- (3) One
- (4) Three
- (5) None

**Ans88.** (5) None

**Q89. Four of the following five belong to a group in a certain way, find which of the one does not belong to that group?**

- (1) Zycian - Vans
- (2) Nusey - Tommy
- (3) Oxoxi - Champion
- (4) Zopho - Tommy
- (5) Rymet – Tommy

**Ans89.** (4) Zopho – Tommy

**Explanation (85-89):**

Days	Company	Clothes Brand
Monday	Zycian	Nike
Tuesday	Nusey	Adidas
Wednesday	Voxgeo	Vans
Thursday	Oxoxi	Tommy
Friday	Symstart	Gildan
Saturday	Rymet	Champion
Sunday	Zopho	Levi's

**Direction (90-92): Read the following information carefully. And answer the following questions given below.**

Six family members viz. F1, F2, F3, F4, F5, F6 are born in year 1959, 1972, 1991, 1995, 2003 and 2007 not necessary in the same order. (All the ages of the given persons have been calculated on the base year 2019 and all the members are considered to be born on the same date of the same month).

Male member in a couple is an elder one. F2 is twice the age of his/her son. F4 has two children. F5 who is the wife of F4, has one son. F1 is the aunt of F3. F2 is younger than the person of age 28 years. F1 is younger child of F4 and younger than F2. F6, the son of F5 was born in 1991.

**Q90. What is the age of F6?**

1. 24
2. 16
3. 10
4. Cannot be determined
5. None of these

**Ans90.** 5. None of these

**Q91. How is F2 related to F5?**

1. Daughter in law

2. Daughter
3. Wife
4. Cannot be determined
5. None of these

**Ans91.** 1. Daughter in law

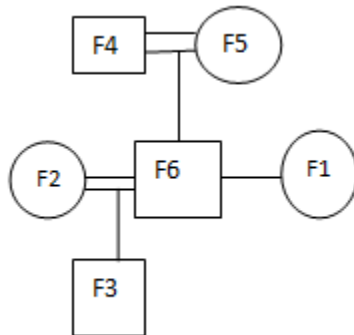
**Q92.** What is the sum of ages of F2 and F6?

1. 52
2. 44
3. 67
4. Cannot be determined
5. None of these

**Ans92.** 1. 52

**Explanation (90-92):**

Year	Age	Person
1959	60	F4
1972	47	F5
1991	28	F6
1995	24	F2
2003	16	F1
2007	12	F3



**Direction (93-96):** Read the following information carefully. And answer the following questions given below.

Ten policeman are sitting in two parallel rows, facing each other. P1, P2, P3, P4 and P5 are facing south while P6, P7, P8, P9 and P10 are facing North. All of them lives in the same apartment having five floors, ground floor is numbered as 1 and topmost is numbered as 5. There are two policeman living on each floor of the apartment.

P8 faces P3. P2, who is sitting to the immediate left of P4, is facing P10, who lives on the floor immediately below P2. P3, who lives on the same floor as P10, sits on one of the extreme ends. P5 sits opposite to P7 and both live on the same floor.

There is only one floor between P6 and P7. P3 lives below P8. P10 sits to the immediate left of P6 who faces P1. P6 who lives on the topmost floor sits on one of the extreme ends. P4 and P6 lives on the same floor. P8, who is an immediate neighbour of P7 lives on the same floor as P2.

**Q93.** Who is sitting third to the right of the one of the policeman who lives on the third floor?

- (1) P10
- (2) P6
- (3) P8
- (4) P9
- (5) None of these

**Ans93.** (5) None of these

**Q94.** Which two policeman live on the fourth floor?

- (1) P10 – P5
- (2) P9 – P2
- (3) P6 – P4
- (4) P9 - P1
- (5) None of these

**Ans94.** (4) P9 - P1

**Q95.** Who sits between P9 and P6?

- (1) P7
- (2) P10
- (3) P9
- (4) P3
- (5) P5

**Ans95.** (2) P10

**Q96.** Who among the following does not live on an even numbered floor?

- (2) P9
- (2) P1
- (3) P8
- (4) P2
- (5) None of these

**Ans96.** (5) None of these

**Q97.** Which of the following person facing P10?

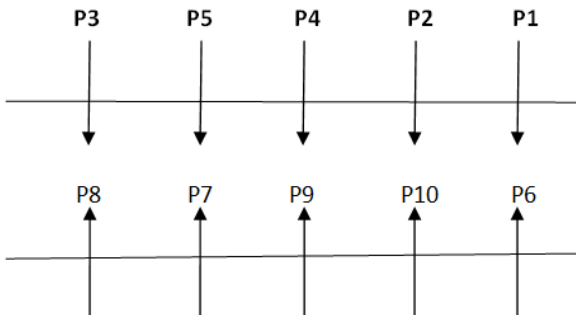
- A. P2
- B. P9
- C. P1
- D. P3
- E. None of these

**Ans97.** A. P2

**Explanation (92-97):**

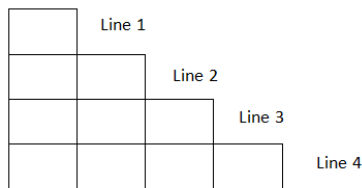


Floors	Policeman
5	P6-P4
4	P1-P9
3	P7-P5
2	P8-P2
1	P10-P3



**Direction (98-100):** Read the following information carefully. And answer the following questions given below.

Ten shelves are placed in the following manner one above the other.



Only two shelves are kept between shelf T and shelf R. T and S are not in the same line. More than three shelves are between V and S. Shelf U is immediate left to shelf Z. Shelf R is immediate right to shelf Q, who is in odd numbered line. Shelf X is just above shelf U. Shelf Y is on odd numbered line. Shelf Q is kept just above shelf W.

**Q98.** How many shelves are between shelf Q and shelf U?

- A. none
- B. one
- C. two
- D. three
- E. more than three

**Ans98.**(E) more than three

**Q99.** Which shelf is kept immediately above shelf V?

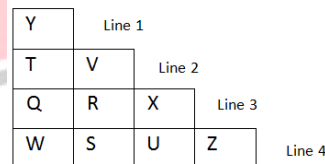
- A. Y
- B. U
- C. W
- D. X
- E. No shelf

**Ans99.** (E) No shelf

**Q100.** How many shelves are kept to the right of shelf Y in the same line?

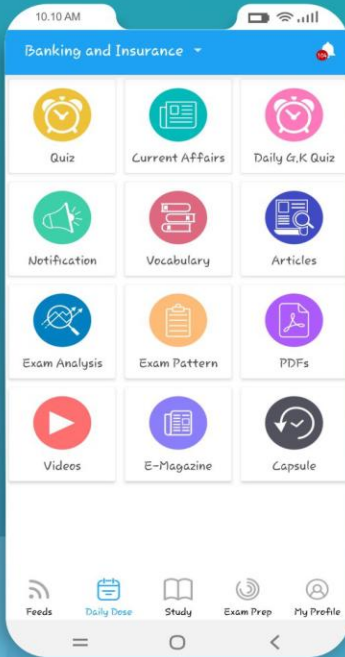
- A. none
- B. one
- C. two
- D. three
- E. more than three

**Ans100.**(1) none

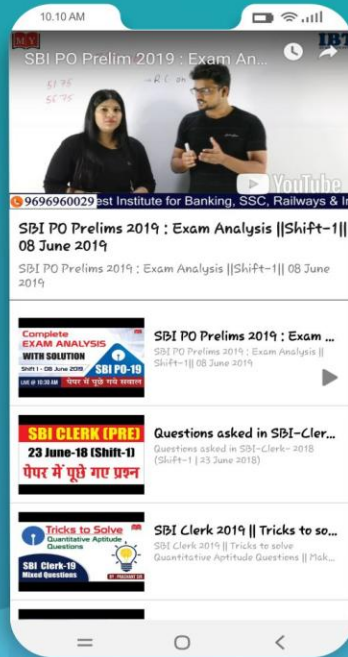


# Are you Preparing for Govt. Jobs

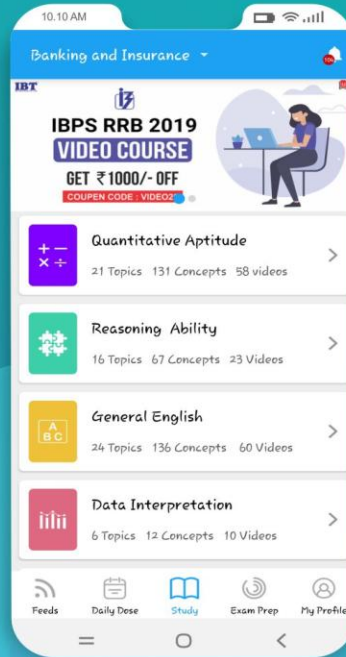
Download **make MY exam** App now



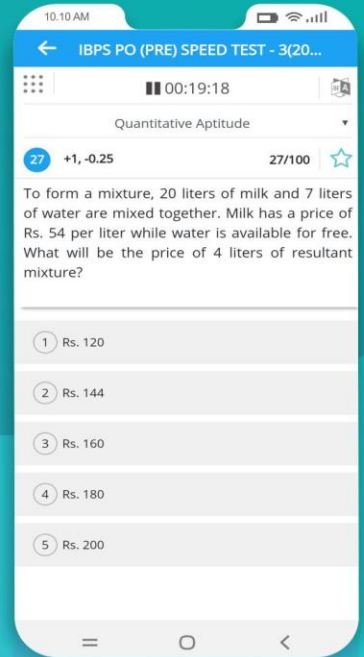
CURRENT AFFAIR & EXAM ALERT



VIDEO LECTURES



STUDY CONCEPTS & PRACTICE



ONLINE MOCK TEST

## OUR VIDEO COURSES

### BANK ALL EXAMS

Video Course  
& Test Series

Only ₹ 4599/-

99152-28862



♦ 395 Videos  
♦ 100 Tests

### SSC ALL EXAMS

Video Course  
& Test Series

Only ₹ 3999/-

99152-28862



♦ 671 Videos  
♦ 100 Tests

### IBPS RRB ASST.-PRE

Video Course  
& Test Series

Only ₹ 2599/-

99152-28862



♦ 252 Videos  
♦ 20 Tests

### IBPS RRB OFFICER-PRE

Video Course  
& Test Series

Only ₹ 2599/-

99152-28862



♦ 252 Videos  
♦ 20 Tests

### IBPS PO PRE EXAM

Video Course  
& Test Series

Only ₹ 2999/-

99152-28862



♦ 327 Videos  
♦ 20 Tests

### NVS LDC - CBT EXAM

VIDEO COURSE

Only ₹ 2499/-

99152-28862



♦ 336 Videos

Download India's #1 Competitive Exam Prep. App

